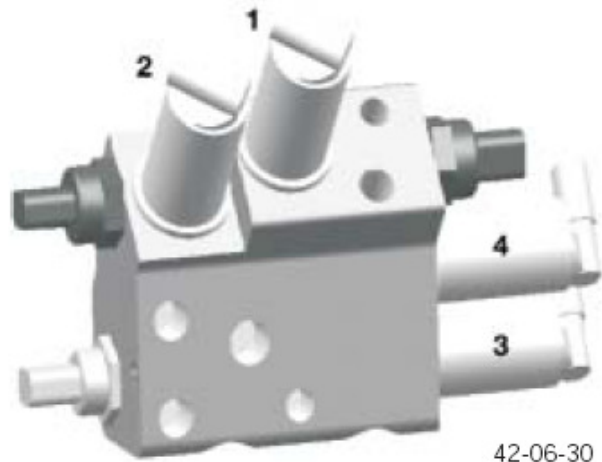


Pressure Control Valves: There is a pressure control valve for both the front (1 below) and rear (2 below) axle hydraulic circuits. The valves adjust the front and rear axle stabilizer bar actuation pressures. When driving straight ahead, the pressure control valves are de-energized opening the valve diameters allowing the fluid to return to the reservoir (circulating).

When cornering, the valves are energized to readily increase the pressure in the oscillating motors to the setpoint value.

Depending on the lateral acceleration and the vehicle speed, the pressures for the front axle are regulated between 5 to 180 bar and 5 to 170 bar for the rear axle.



42-06-30

Directional Valve: The directional valve (3 above right) is electrically actuated by the ARS control module to control the direction of the hydraulic pressure for right and left hand twists.

Failsafe Valve: The failsafe valve (4 above right) is electrically actuated by the ARS control module to open the front axle hydraulic circuit to the oscillating motor. The circuit is closed when the failsafe valve is de-energized, decreasing the system pressure (circulating).