

# Seat Belt Pretensioner

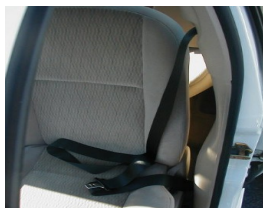
**DISCLAIMER: Serious injury or death can be a result of improper removal/installation techniques. Follow manufacturer's instructions for disabling Restraint Systems PRIOR to working on any airbag component.**

**Airbags are a dangerous and powerful safety restraint system and should not be taken lightly or tampered with. If you are not a qualified/ certified technician, seek the help of a professional to service the airbag system on your vehicle.**

Seat Belt Pretensioners are seat belts with an explosive charge incorporated designed to retract and hold the occupant in the proper position just prior to the Airbag deployment. This component is typically the 1<sup>st</sup> stage of an Airbag system deployment and is designed to deploy moments before the Airbag(s). Some vehicle manufacturers utilize the belt and retractor for this purpose, while others use the buckle and receiver. On occasion, both the belt and the buckle have pretensioners. Seat Belt Pretensioners are used in both front and rear seats.



When a Seat Belt Pretensioner has deployed, typically there is visible evidence. If the Seat **Belt** Pretensioner has deployed, usually the belt will no longer retract or conversely it will no longer be able to be extracted, it will be very, very tight. If the Seat Belt **Buckle** Pretensioner has deployed, typically there is evidence of a contracted buckle or obvious damage to the receiver itself.



**Deployed Belt**

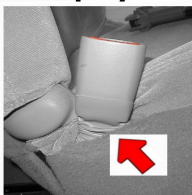
**Deployed**



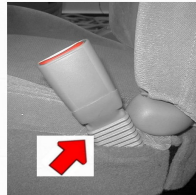
**New**



**Deployed**



**NEW**



**Deployed**



**New**